



Two Group Summary

High School Placement Test

SAMPLE SCHOOL (ZZ026)

Date: 11/19/16 Form: 2F Grade: 08 Section:



Scholastic Testing Service, Inc.

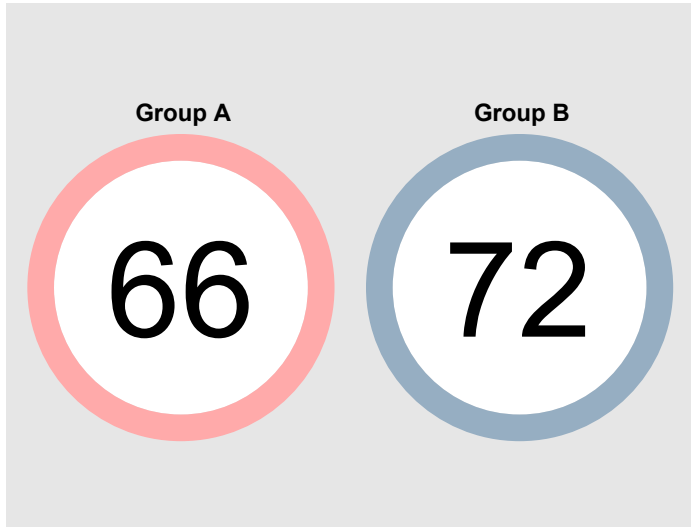
Group A: SAMPLE SCHOOL

Group A Size: 210

Group B: SAMPLE SCH PRV YEAR

Group B Size: 196

Median National Percentile (Composite Score)

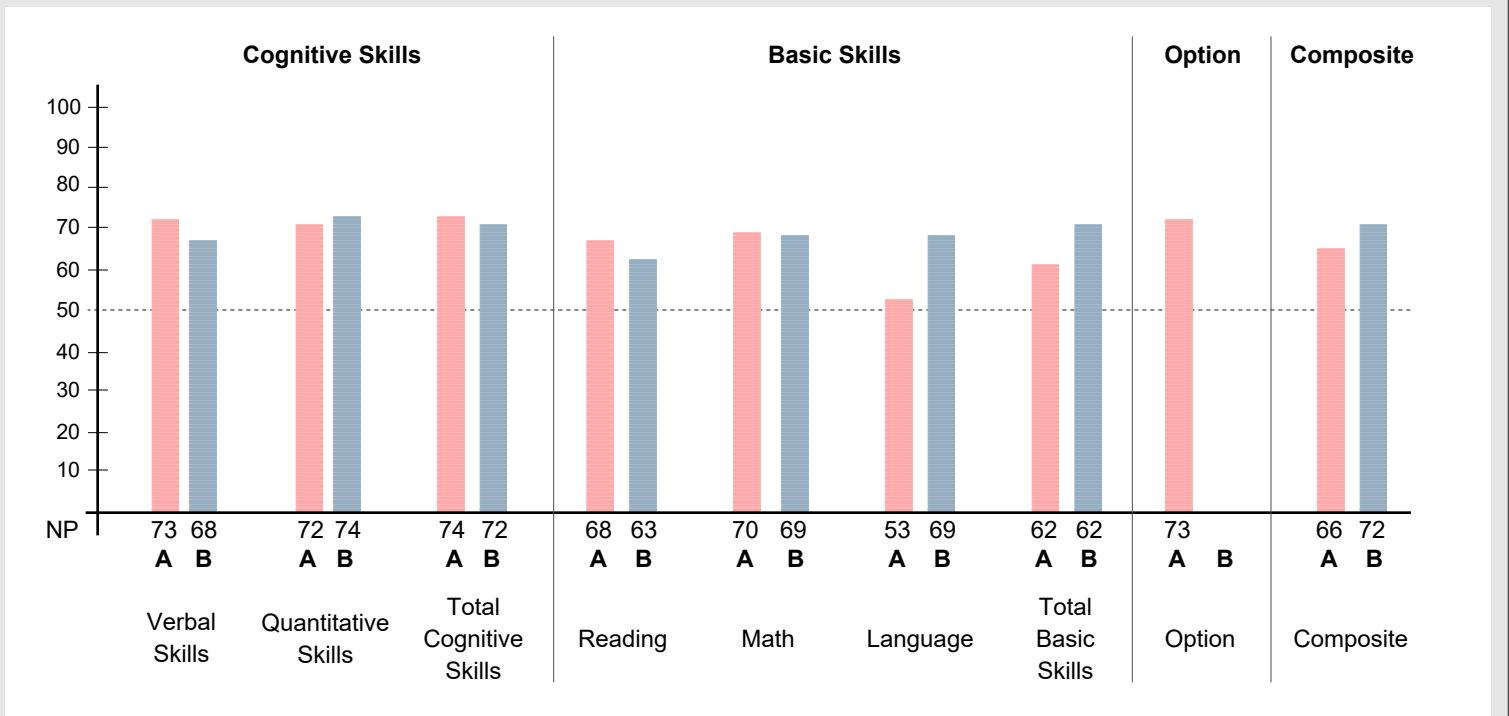


Average Standard Scores

	Group A	Group B
Verbal Skills	541	536
Quantitative Skills	571	574
Total Cognitive Skills	553	551
Reading	530	535
Math	541	543
Language	508	545
Total Basic Skills	524	539
Composite	535	543

Median National Percentile Chart

The following chart allows you to look at two different populations of your testing group and compare their median performance to each other and the national average. A line has been drawn where the groups would match the national average.



Note that the Option test is not included in the computation of the battery Composite score.

NP = National Percentile

Report By: Total Group