

GROUP MEDIAN NATIONAL PERCENTILE CHART

School Name: SAMPLE SCHOOL (1)

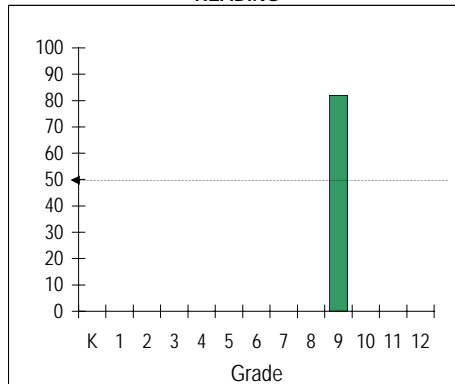
Educational Development Series
(Scholastic Testing Service, Inc)

AVERAGE ACHIEVEMENT ACROSS GRADES

Bar= Current year data Dash Ln=Natl Avg

Dt: 5/16/12

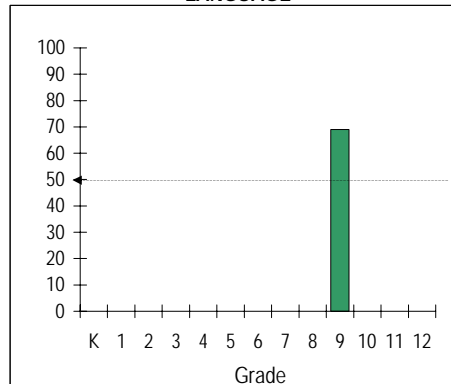
READING



Mdn %ile

82

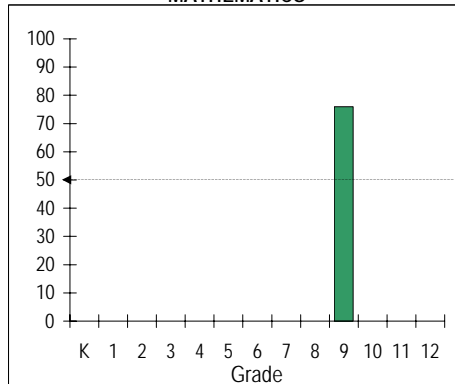
LANGUAGE



Mdn %ile

69

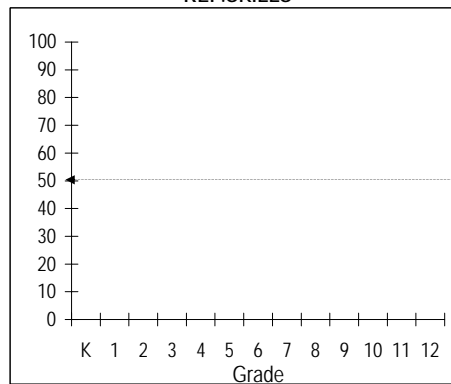
MATHEMATICS



Mdn %ile

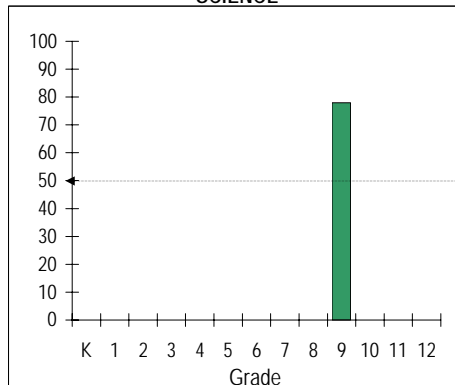
76

REF.SKILLS



Mdn %ile

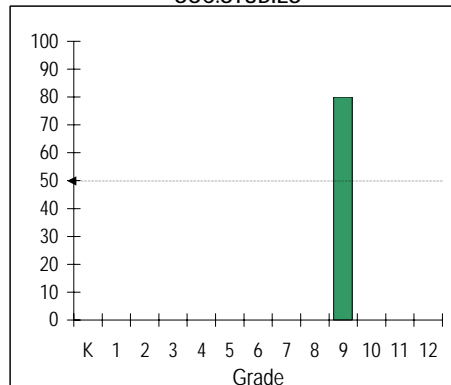
SCIENCE



Mdn %ile

78

SOC.STUDIES



Mdn %ile

80

GROUP MEDIAN NATIONAL PERCENTILE CHART

School Name: **SAMPLE SCHOOL (1)**

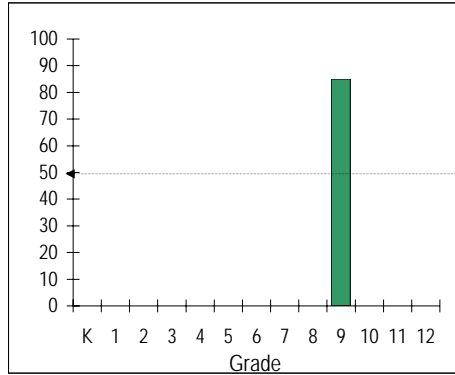
Educational Development Series
(Scholastic Testing Service, Inc)

AVERAGE ACHIEVEMENT ACROSS GRADES

Bar= Current year data Dash Ln=Natl Avg

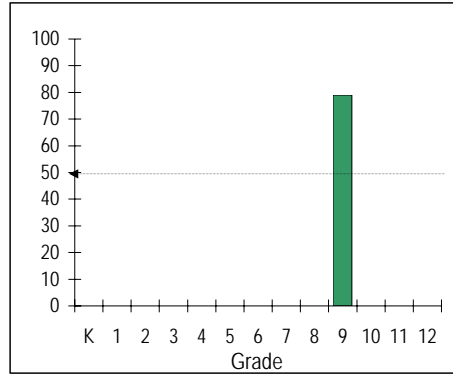
Dt: 5/16/12

TOTAL COGNITIVE SKILLS



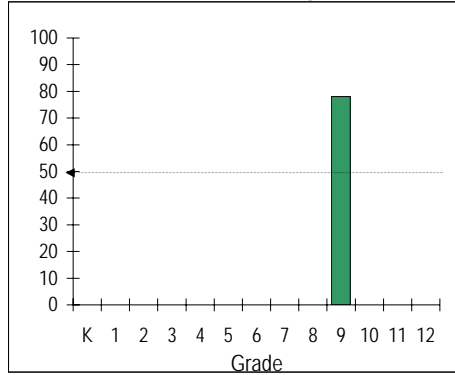
Mdn %ile

TOTAL BASIC SKILLS



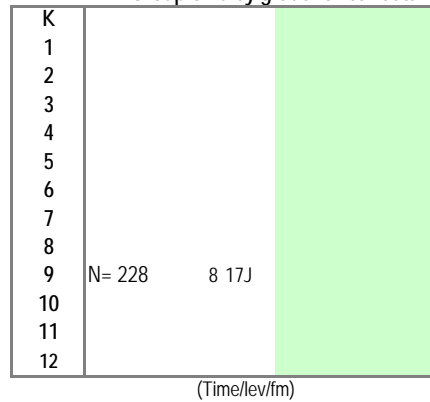
Mdn %ile

BATTERY AVERAGE



Mdn %ile

Group Size by grade for bar data



Median %ile Summary Tables

Current year data

Verb	75
N.Verb	88
T.Cog	85
Read	82
Lang	69
Math	76
TBS	79
Ref.Skl	
Sci	78
S.Stud	80
Bat.Avg	78
Grade	K 1 2 3 4 5 6 7 8 9 10 11 12

(Reserved for 2nd Data Set)

Verb		
N.Verb		
T.Cog		
Read		
Lang		
Math		
TBS		
Ref.Skl		
Sci		
S.Stud		
Bat.Avg		
Grade	K 1 2 3 4 5 6 7 8 9 10 11 12	

The 50th %ile for a group is the middle or median score attained by the group
The charts above depict the typical or average performance of your students across:
the grades for the indicated areas.